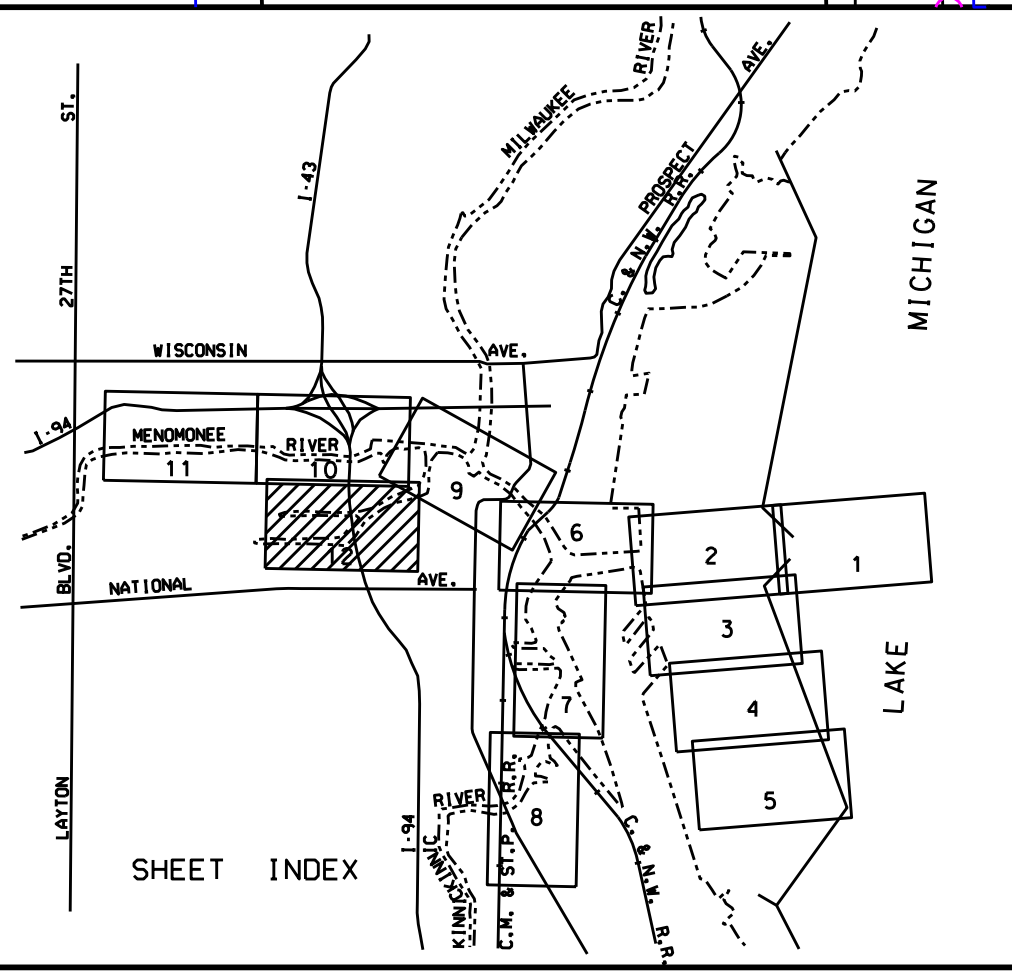
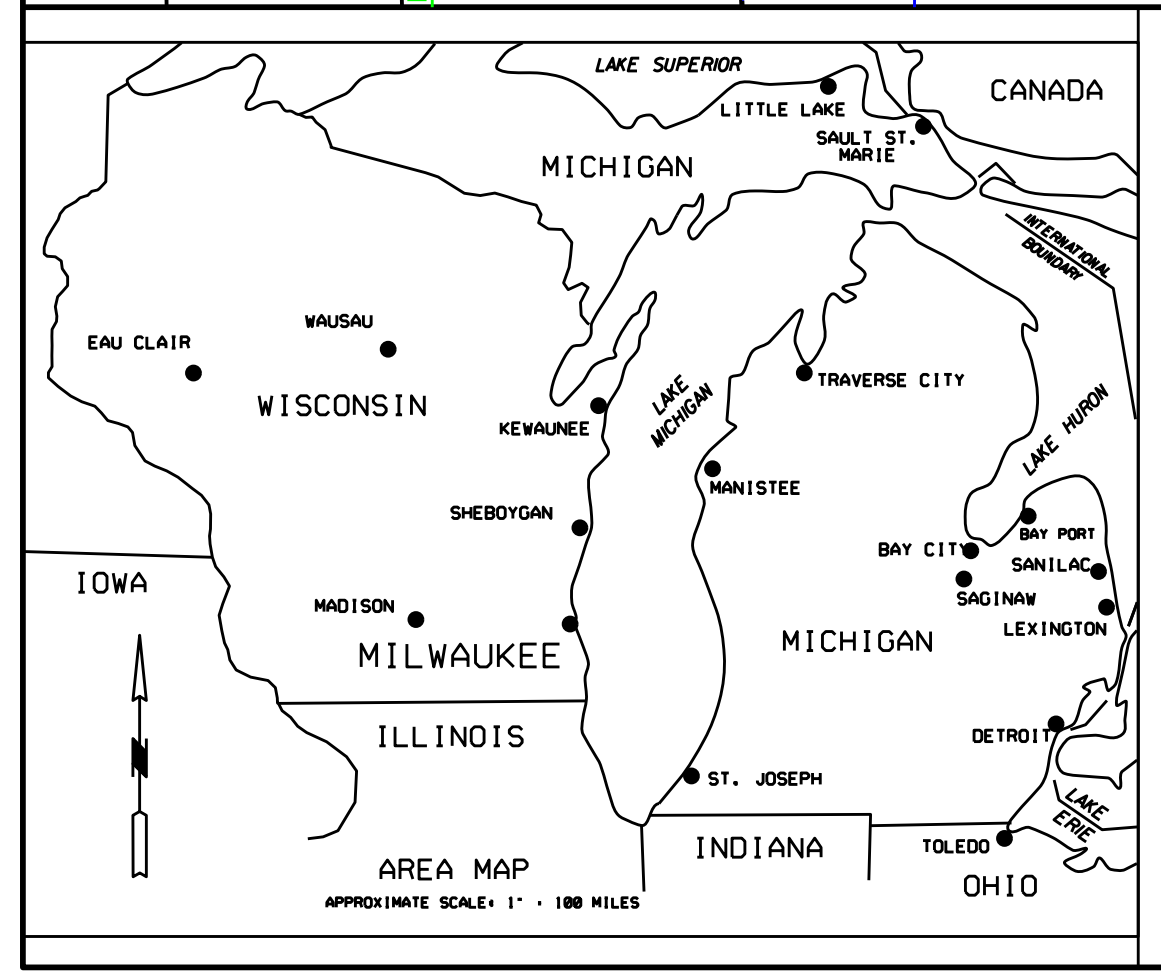


COORDINATE TABLE		COORDINATES	
STA.	DESCRIPTION	NORTHING	EASTING
407	CHANNEL PT.	382391.38	252583.84
408	DO.	382420.499	252550.619
409	DO.	382165.827	252572.676
410	DO.	382745.415	252518.093
411	DO.	382108.819	252578.357
412	DO.	382210.789	252576.271
413	DO.	382107.138	2525048.263
414	DO.	382208.540	2525019.075
415	DO.	382035.223	252498.100
415A	DO.	382768.648	252454.836
416	DO.	381845.064	252423.759
417	DO.	381667.728	252441.311
419	DO.	381732.172	252494.723
421	DO.	381643.115	252459.658
422	DO.	381717.245	2523612.263
423	DO.	381620.131	2523449.554
424	DO.	381695.681	2522446.874
425	DO.	381618.108	2522311.723
426	DO.	381931.084	252209.984
501	DO.	381638.761	2524307.639
502	DO.	381650.366	2524309.363
503	DO.	381523.557	2524319.408
504	DO.	381475.403	2524209.333
505	DO.	381525.415	2524190.928
506	DO.	381307.655	2524101.051
508	DO.	381058.448	2523918.544
509	DO.	380962.276	2523958.547
510	DO.	381055.670	2523876.689
511	DO.	380952.445	2523444.107
512	DO.	381027.130	2523342.912
SN	CENTERLINE PT.	382412.584	2525842.688
SD	DO.	382220.359	2525229.386
SE	DO.	382159.805	2525127.824
SO	DO.	382157.491	2525017.113
SP	DO.	381806.855	2524339.298
SS	DO.	381680.180	2523835.961
ST	DO.	381658.206	2522448.414
SU	DO.	381655.596	2522100.858
BR	DO.	381806.855	2524339.298
BS	DO.	381701.591	2524355.859
BT	DO.	381443.483	2524163.415
BU	DO.	380999.385	2523943.347
BV	DO.	380989.788	2523943.518



**LEGEND**

- GPS CONTROL MONUMENT
- BRONZE OR BRASS DISC
- CHANNEL LINE TURNING POINT

THE SURVEY SHOWN ABOVE WAS CONDUCTED BY THE LAKE MICHIGAN AREA OFFICE, KEWAUNEE SUB OFFICE SURVEY PARTY ON 14 NOVEMBER 2011 (569+00-597+00) AND 06 DECEMBER 2011 (564+00-580+00) USING GPS POSITIONING, AN INERSPACE 448 SOUNDER, AND A HYPACK HYDROGRAPHIC SURVEY SYSTEM.

**NOTES:**

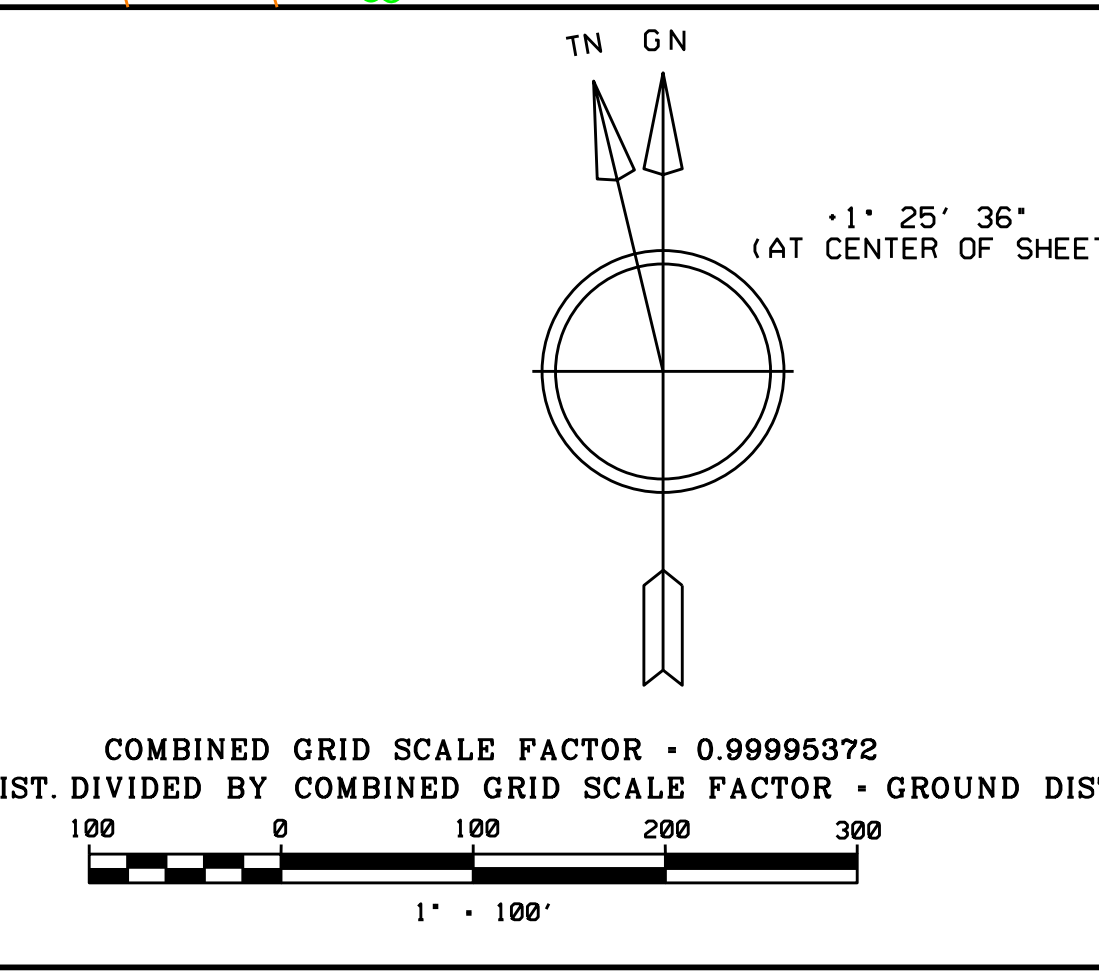
SURVEY CONTROL AND BENCH MARK DATA IS AVAILABLE FROM THE DETROIT DISTRICT, ENGINEERING & TECHNICAL SERVICES, OPERATIONS TECHNICAL SUPPORT BRANCH, LAKE MICHIGAN AREA OFFICE, KEWAUNEE SUB OFFICE.

THE COORDINATE GRID SYSTEM SHOWN IS REFERENCED TO THE WISCONSIN STATE PLANE COORDINATE SYSTEM, LAMBERT PROJECTION, SOUTH ZONE (4803), NORTH AMERICAN DATUM 1983 (NAD83), US FOOT.

ALL SOUNDINGS ARE IN FEET AND ARE REFERENCED TO LOW WATER DATUM ELEVATION, 577.5 FEET ABOVE MEAN WATER LEVEL AT RIMOUSKI, QUEBEC (INTERNATIONAL GREAT LAKES DATUM 1985).

THE INFORMATION DEPICTED ON THIS MAP REPRESENTS THE RESULTS OF SURVEYS MADE ON THE DATES INDICATED AND CAN ONLY BE CONSIDERED AS INDICATING THE GENERAL CONDITIONS AT THAT TIME.

PROJECT DEPTH FOR THIS AREA IS 21.0 FEET.



NO.	DATE	REVISION	BY
<b>U.S. ARMY ENGINEER DISTRICT, DETROIT</b> CORPS OF ENGINEERS DETROIT, MICHIGAN			
DRAWN BY K. J. K.		REVIEWED BY R. D. M.	
CHECKED BY A. R. M.		REVIEWED BY	
SUBMITTED:		APPROVAL RECOMMENDED:	
APPROVED		DATE	
SCALE 1" = 100'		DRAWING NUMBER	
SHEET 12 OF 12			

K. A. G.  
45-C6  
248  
08DEC11